

VII FORO DE INTERACCIÓN

MATEMÁTICA APLICADA - INDUSTRIA


Energy		Washing machine
Manufacturer Model		
More efficient		B
A		
B		
C		
D		
E		
F		
G		
Less efficient		
Energy consumption kWh/cycle <small>(based on standard test results for 60°C cotton cycle) Actual energy consumption will depend on how the appliance is used</small>	1.75	
Washing performance <small>A: higher G: lower</small>	A B C D E F G	
Spin drying performance <small>A: higher G: lower Spin speed (rpm)</small>	A B C D E F G 1400	
Capacity (cotton) kg	5.0	
Water consumption	5.5	
Noise (dB(A) re 1 pW)	Washing 5.2 Spinning 7.6	
<small>Further information contained in product brochure</small>		

Imagen bajo Licencia Creative Commons, cortesía de Andrew Dunn

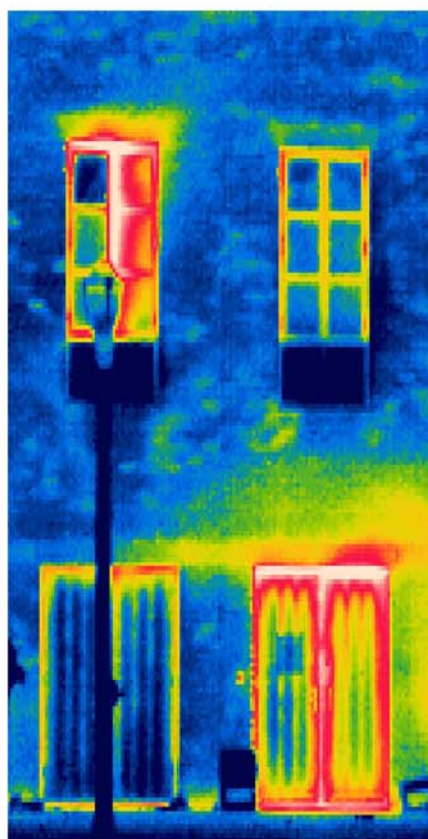


Imagen bajo Licencia Creative Commons, cortesía de International Rivers



Imagen bajo Licencia Creative Commons, cortesía de david.nikonvscanon



Imagen bajo Licencia Creative Commons, cortesía de caribb

11 de junio de 2010

Facultade de Matemáticas, USC
Santiago de Compostela

Empresas participantes:

Umana Ingeniería
TSI
Energylab
Airbus
Caixa Galicia
Intelli Glass
GMV

<http://matematica.nodo.cesga.es/viifimai>